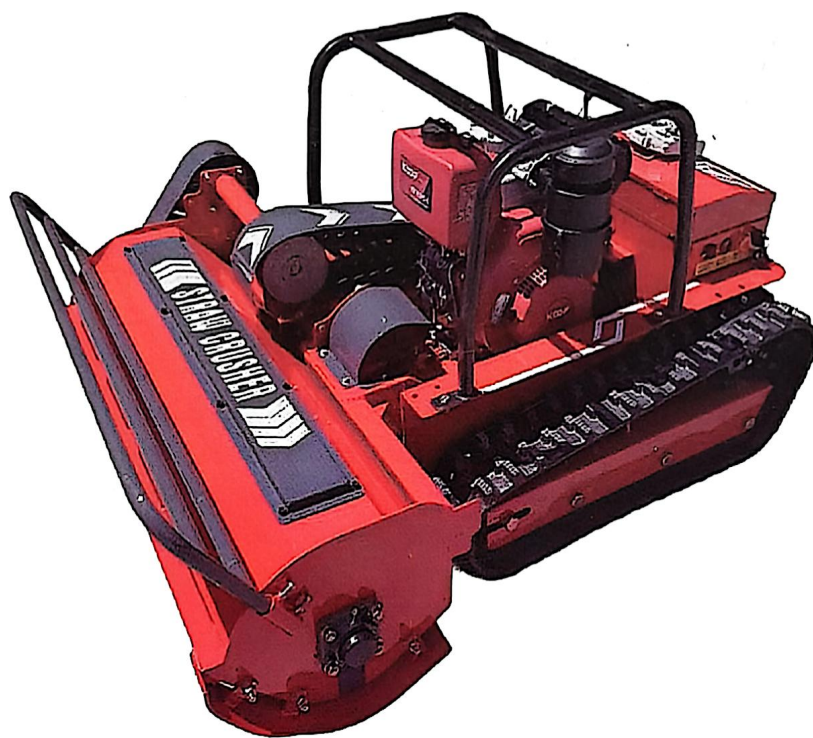


# REMOTE CONTROL LAWN MOWER

## OPERATION AND MAINTENANCE INSTRUCTION MANUAL



## User Guide

Thank you for purchasing the AMD series remote-controlled lawn mower (here in after referred to as the "lawn mower"). This manual is an integral part of the product and should be kept properly. To ensure correct usage, please read this manual carefully before operation to understand the following important information:

1. The primary purpose, working principle, and main technical parameters of the lawn mower.
2. The operation methods and maintenance of the lawn mower.
3. The safety rules and warning labels mentioned in this manual must be strictly followed by the operator. Users should read them carefully. Any injuries, malfunctions, or losses resulting from failure to comply with these guidelines shall be borne by the user.
4. The lawn mower can be customized in terms of application and configuration. This manual applies only to the standard model. For customized models, please contact the sales representative for specific details.
5. The lawn mower must be used strictly in accordance with the instructions in this manual. It should only be operated, maintained, and repaired by personnel familiar with the machine. At all times, accident prevention rules and other safety regulations must be followed.
6. All products undergo continuous improvement. The images and illustrations in this manual are for reference only, and the actual product may vary. Any product improvements will be made without prior notice.
7. To continuously enhance our products and better serve users and society, if you have any suggestions regarding product improvements, additional features, or supporting applications, please inform us in a timely manner. We sincerely appreciate your feedback!

# Table of Contents

Chapter 1	Safety Rules .....	3
Chapter 2	Product Features and Structural Overview .....	4
Chapter 3	Technical Specifications .....	7
Chapter 4	Lawn Mower Start Up and Shutdown Operations .....	8
Chapter 5	Inspection, Maintenance, and Precautions .....	10

## Chapter 1. Safety Rules

Operators must read this manual in advance to become familiar with the machine's features and instructions. In this manual, the symbol "▲" indicates a safety warning, providing important safety information and alerts about potential hazards. Please read the information carefully and inform other operators.

### ▲ Caution

1. During operation, do not touch or come into contact with any moving parts of the lawn mower using your hands or any other part of your body. Avoid getting too close to dangerous components such as tracks and cutting blades. Maintain a safe distance from the machine at all times. Before performing maintenance, adjustments, cleaning, or removing debris, the machine must be turned off and the engine must be completely shut down.
2. Before starting the machine, always check the machine and inspect the surrounding area to ensure there are no potential safety hazards.



3. Upon receiving the machine and before starting it for the first time, check all connection points and screws to see if any are loose or missing. If any issues are found, repair them before operating the machine.
4. When the mower is in motion or in operation, clear any obstacles such as stones, sticks, or other debris in front of it to prevent them from getting stuck in the tracks and damaging the machine.
5. Minors are strictly prohibited from operating this machine. Individuals who have not read the instruction manual are also not allowed to operate it. Operators must carefully read the manual and fully understand all control mechanisms and proper usage methods.
6. If the lawn mower will not be used for an extended period, drain the fuel from the fuel tank. Additionally, regularly check the mower's battery level. If the machine is not in use for an extended period, charge the battery every 60 days to prevent battery damage due to prolonged power depletion.

## Chapter 2. Product Features and Structural Overview

### I. Product Introduction

The AMD series lawn mower features a **hybrid power design**, integrating both fuel and electric power. It comes with a built-in power generation system that charges automatically during operation. With a compact structure and powerful performance, its tracked mobility allows it to operate on slopes up to 45°. The mower has the following key features:

#### Remote-Controlled Operation

The mower can be operated remotely using a **wireless remote control** with a maximum range of **600 meters**. This eliminates the need for manual operation in the field, reducing exposure to harsh sunlight, mosquito bites, and potential hazards such as snakes and insects.

#### Simple and Easy to Operate

The mower has a simple start-up process and is easy to use. Compared to traditional mowers, the remote-controlled mower is more user-friendly, easier to operate, and provides a safer working environment.

#### High Safety Standards

Operators can control the mower from a safe distance, ensuring human-machine separation. From an elevated vantage point, users can oversee the entire operation and immediately stop the mower in case of any abnormalities.

#### High Work Efficiency

The mower can cover up to **4.5 acres per hour**. Operators only need to control it remotely,

4

significantly reducing labor intensity and saving manpower compared to traditional mowing methods. It also provides better grass-cutting performance.

### Wide Application Range

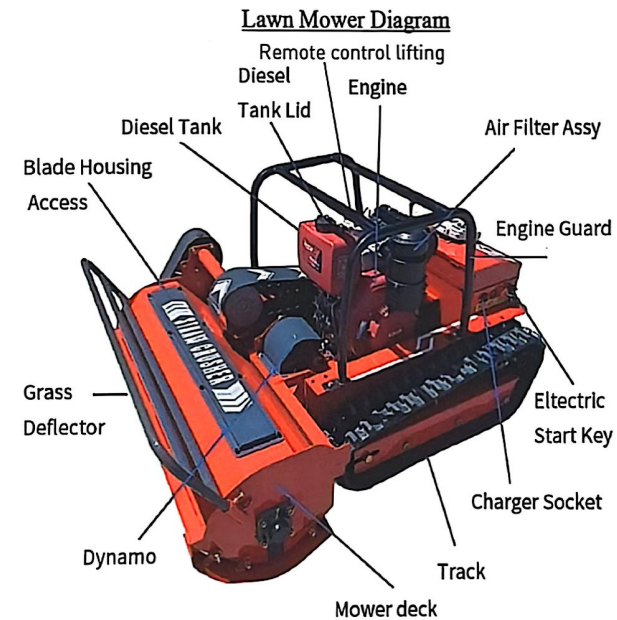
With its tracked design and low-profile body, the mower can easily navigate slopes, ditches, and rough terrains. The automatic floating mechanism adjusts the cutting height according to the terrain, making it suitable for uneven working environments.

This mower is ideal for various terrains, including:

- Mountainous orchards
- Solar farms
- Slopes and embankments
- Hilly areas, terraces, and rough landscapes
- Gardens, villas, and landscaping projects
- Weed removal and grass cutting in parks, green spaces, and wastelands

The adjustable cutting height allows it to meet the needs of multiple applications, making it a versatile solution for different mowing tasks.

### II. Structural Overview



5



### Chapter 3. Technical Specifications

Remote Control Diagram



**Note :**

- The battery level of the remote control affects the actual control range. Please check the battery status regularly and replace the batteries (4 AA batteries) when necessary.
- If the remote control is not used for a long period, remove the battery to prevent power loss or damage caused by battery leakage.
- Do not touch or operate other buttons unnecessarily, as this may cause the remote control to malfunction.

Model	AMD-R80	AMD-R100	AMD-R120
Cutting width	800mm	1000mm	1200mm
Stubble height	20-200mm		
Stubble height adjustment	Manual adjustment		
Travel speed	0-5km/h		
Working slope	0-30°		
Cutting knife form	Y hanging knife		
Number of	16 sets/32 pieces	20 sets/40 pieces	24 sets/48 pieces
Track width	15cm	15cm	18cm
Operation mode	Remote control operation		
Starting mode	Electric start		
Control voltage	24V		
Charging method	Engine self-powered		
Matching power	Diesel 192F (12HP) / Petrol 459 (18HP)	Diesel 192F (12HP) / Petrol 459 (18HP)	Diesel 195F (15HP)
Mowing efficiency	6mu/h	7.5mu/h	9mu/h
Product Size	1560mm*980mm*820	1560mm*1170mm*820mm	1560mm*1380mm*820mm
Net weight	338kg	346kg	356kg
Package Size	1620mm*1040mm*1030mm	1620mm*1220mm*1030mm	1620mm*1430mm*1030mm
GrossWeight	398kg	415kg	432kg

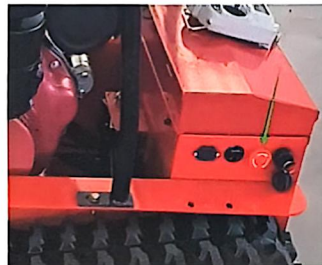
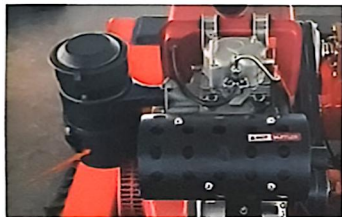


## Chapter 4. Lawn Mower Start-Up and Shutdown Operations

### A. Start-Up and Operation

#### Pre-Start Checklist

1. Check the engine fuel level – Ensure the correct fuel type is used based on the ambient temperature (diesel or gasoline). Also, check the engine oil level and address any issues before operation.
2. Check the battery level – If the battery voltage is below **\*\*24V\*\***, charge it before using the mower.
3. Ensure safety for those nearby – Warn people around you to keep a safe distance from the machine.
4. Inspect the working area – Remove large stones, rocks, and debris in advance to prevent mower malfunctions. Be cautious when operating near ditches, obstacles, or uneven terrain to avoid collisions or tipping accidents.
5. Check all machine connections – Inspect screws and bolts to ensure they are not loose or missing. If any are loose, tighten or repair them before use.
6. For first-time use (Diesel model only) – The air filter must be filled with engine oil (this step is not needed for the gasoline version). Remove the oil bowl from the air filter and add engine oil until it reaches halfway up the recessed bottom part of the bowl.



#### Starting the lawn mower

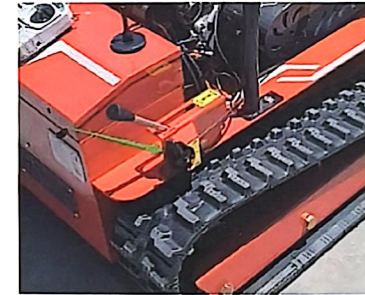
- (1) Turn the power switch clockwise to turn on the main power of the lawn mower.

8

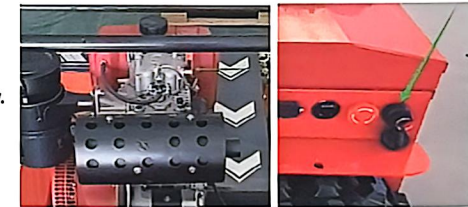
- (2) Press and hold the remote control power switch 2 seconds to turn on the remote control. Once the remote control successfully pairs with the mower, you can operate it to move forward, backward, and perform other movements.



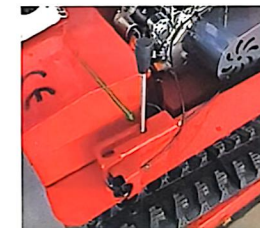
- (3) Set the throttle to half position.



- (4) Press the engine decompression button while turning the starter key. After 2-3 seconds, release both the decompression button and the key. The engine should now start.



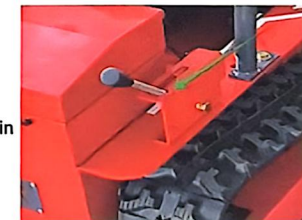
- (5) (5) Increase the throttle, then push the clutch lever to the working position as shown in the diagram to start the cutting blades. At this point, the lawn mower is fully started and ready to begin mowing.



#### Stopping and Shutting Down the Engine

Stop the machine when it reaches the destination or if it needs to be parked for any other reason.

1. To stop the rotation of the cutting platform, push the clutch push rod to the stop position as shown in the right figure.



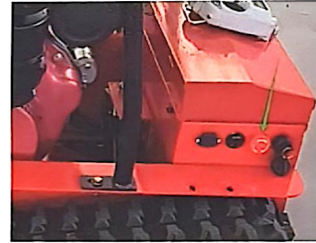
9



2. To stop the engine, reduce the throttle to its minimum position until the engine shuts off.



3. To shut down the lawn mower's main power, rotate the power switch counterclockwise and press it down.



4. Press the remote control power switch to turn off the remote control.



## Chapter 5. Inspection, Maintenance, and Precautions

Proper maintenance is essential to prevent malfunctions of the tracked lawn mower and to ensure efficient and safe operation. Therefore, it is imperative to diligently and promptly follow the guidelines outlined below.

### I. Inspection and Maintenance

- a. **Oil Replacement:** The machine is initially filled with test oil (grade CE or higher).

After the first 20 hours of use, the engine oil must be replaced, and the oil filter cleaned (preferably using gasoline). Subsequent oil changes should occur at 50 hours for the second change and every 100 hours thereafter. After each use, clean any debris from the air filter's filter element. The filter element can be washed with water or blown clean with a high-pressure air pump. Replenish the oil in the air filter every 10 hours of use and replace it every 20 hours.

- b. **Air Filter Maintenance:** Ensure the air filter contains oil and regularly clean the air filter element and replace the oil inside. For subsequent uses, simply add oil to the air filter (up to half of the bottom hole); there's no need to soak the filter element in oil as before. After each use, clean any debris from the air filter's filter element. The filter element can be washed with water or blown clean with a high-pressure air pump. Replenish the oil in the air filter every 10 hours of use and replace it every 20 hours.
- c. **Blade and Shaft Cleaning:** After each use, remove any strings, wires, or other debris from the blades and shafts to keep them clean and free from entanglements. If any blade damage is detected, replace it promptly. Remove any string-like debris from the blade shaft in a timely manner.
- d. **Screw Inspection:** After using the equipment, inspect all parts for any loose or missing screws. If such issues are found, repair them promptly.
- e. **Belt Inspection:** Regularly check the belt tension, which should be 10mm. If the machine exhibits low generator voltage or belt slippage noises, adjust the tension or replace the belt as necessary.
- f. **Battery Maintenance:** If the lawn mower is not used for an extended period, regularly check the battery's charge. If the battery is low, recharge it promptly. For long-term storage, fully charge the battery and store the mower in a cool, ventilated place. Recharge the machine every two months for at least two hours.

